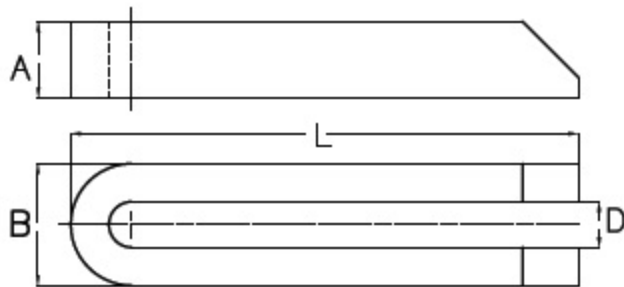


U Clamp



Material: Medium carbon steel, hardened and tempered to 24-32 HRC and Chemically Blackened.

Due to openness of the slot, clamp can be inserted/ removed without disturbing the clamping system

TYPE: T1-UC		IS: 4293 - 1984			
TYPE	D x L	A	B	Suitable for screw size	Weight in kg
T1-UC-11100	11 x 100	20	31	M10	0.30
T1-UC-14125	14 x 125	25	38	M12	0.55
T1-UC-14160	14 x 160	25	38	M12	0.70
T1-UC-18160	18 x 160	30	48	M16	1.10
T1-UC-18200	18 x 200	30	48	M16	1.35
T1-UC-22200	22 x 200	40	52	M20	1.80
T1-UC-22250	22 x 250	40	62	M20	3.00
T1-UC-26200	26 x 200	40	66	M24	2.35
T1-UC-26250	26 x 250	40	66	M24	2.95
T1-UC-33250	33 x 250	49	74	M30	3.80
T1-UC-33315	33 x 315	48	74	M30	4.65
T1-UC-33400	33 x 400	48	74	M30	6.05
T1-UC-33500	33 x 500	48	74	M30	7.70
T1-UC-40400	40 x 400	58	98	M36	10.00
T1-UC-40500	40 x 500	58	98	M36	12.85
T1-UC-40600	40 x 600	58	98	M36	15.70