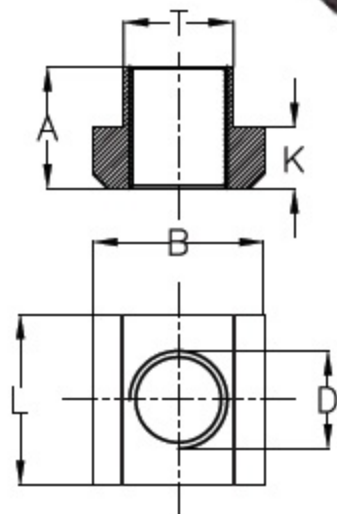


# T Nut

**Material:** Medium carbon steel, hardened and tempered to 24-32 HRC and Chemically Blackened.



TYPE: T2-TN				IS: 2015 - 1977	
TYPE	T x ØD	A	K	B x L	Weight in kg
T2-TN-86	8 x M6	10	6	13 x 13	0.010
T2-TN-108	10 x M8	12	6	15 x 15	0.012
T2-TN-1210	12 x M10	14	7	18 x 18	0.020
T2-TN-1412	14 x M12	16	8	22 x 22	0.035
T2-TN-1612	16 x M12	18	9	25 x 25	0.055
T2-TN-1816	18 x M16	20	10	28 x 28	0.070
T2-TN-2016	20 x M16	24	12	32 x 32	0.115
T2-TN-2018	20 x M18	24	12	32 x 32	0.160
T2-TN-2216	22 x M16	28	14	35 x 35	0.165
T2-TN-2220	22 x M20	28	14	35 x 35	0.145
T2-TN-2420	24 x M20	32	16	40 x 40	0.230
T2-TN-2824	28 x M24	36	18	44 x 44	0.315
T2-TN-3630	36 x M30	44	22	54 x 54	0.600
T2-TN-4236	42 x M36	52	26	65 x 65	1.000