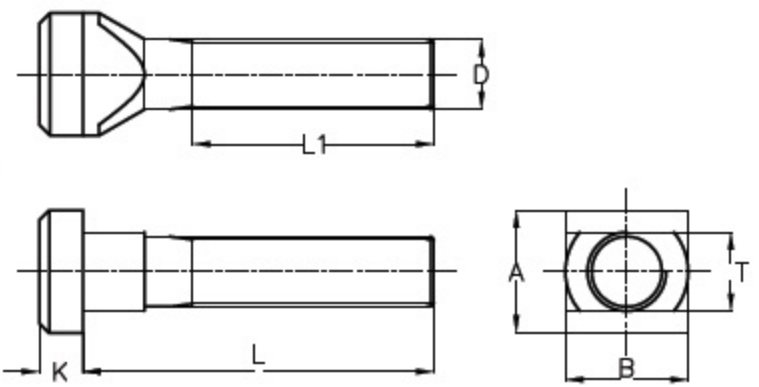


# Forged T-Bolt

**Material:** Medium carbon steel, hardened and tempered to 8.8 Grade as per IS: 1367-2002 (Part III) and Chemically Blackened.

**Note:** Other sizes/grades and bolts with round base supplied on request.



TYPE: T2 - TB		IS: 2014 - 1996					
TYPE	ØD	T-SLOT Size T	L	K	L1	A x B	Wt. kg
T2-TB-832	M8	8	32	6	22	13 x 13	0.020
T2-TB-850	M8	8	50	6	35	13 x 13	0.025
T2-TB-865	M8	8	65	6	35	13 x 13	0.015
T2-TB-880	M8	8	80	6	50	13 x 13	0.035
T2-TB-1040	M10	10	40	6	30	15 x 15	0.030
T2-TB-1065	M10	10	65	6	45	15 x 15	0.045
T2-TB-1080	M10	10	80	6	40	15 x 15	0.055
T2-TB-10100	M10	10	100	6	60	15 x 15	0.065
T2-TB-1250	M12	12	50	7	35	18 x 18	0.060
T2-TB-1265	M12	12	65	7	40	18 x 18	0.070
T2-TB-1280	M12	12	80	7	55	18 x 18	0.080
T2-TB-12100	M12	12	100	7	50	18 x 18	0.10
T2-TB-12125	M12	12	125	7	75	18 x 18	0.15
T2-TB-12160	M12	12	160	7	80	18 x 18	0.15
T2-TB-12200	M12	12	200	7	120	18 x 18	0.20
T2-TB-1450	M12	14	50	8	35	22 x 22	0.10
T2-TB-1465	M12	14	65	8	40	22 x 22	0.10
T2-TB-1480	M12	14	80	8	55	22 x 22	0.10
T2-TB-14100	M12	14	100	8	50	22 x 22	0.12
T2-TB-14125	M12	14	125	8	75	22 x 22	0.15
T2-TB-14160	M12	14	160	8	80	22 x 22	0.15
T2-TB-14200	M12	14	200	8	120	22 x 22	0.20
T2-TB-14250	M12	14	250	8	150	22 x 22	0.25
T2-TB-1665	M16	16	65	9	45	25 x 25	0.15
T2-TB-1680	M16	16	80	9	55	25 x 25	0.15
T2-TB-16100	M16	16	100	9	65	25 x 25	0.20
T2-TB-16125	M16	16	125	9	80	25 x 25	0.25
T2-TB-16160	M16	16	160	9	100	25 x 25	0.27
T2-TB-16200	M16	16	200	9	125	25 x 25	0.30
T2-TB-16250	M16	16	250	9	150	25 x 25	0.40
T2-TB-1865	M16	18	65	10	45	28 x 28	0.15
T2-TB-1880	M16	18	80	10	55	28 x 28	0.20
T2-TB-18100	M16	18	100	10	65	28 x 28	0.20
T2-TB-18125	M16	18	125	10	80	28 x 28	0.25
T2-TB-18160	M16	18	160	10	100	28 x 28	0.30
T2-TB-18200	M16	18	200	10	125	28 x 28	0.35
T2-TB-18250	M16	18	250	10	150	28 x 28	0.45

TYPE: T2 - TB		IS: 2014 - 1996					
TYPE	ØD	T-SLOT Size T	L	K	L1	A x B	Wt. kg
T2-TB-2080	M20	20	80	12	55	32 x 32	0.30
T2-TB-20100	M20	20	100	12	65	32 x 32	0.35
T2-TB-20125	M20	20	125	12	85	32 x 32	0.40
T2-TB-20160	M20	20	160	12	110	32 x 32	0.45
T2-TB-20200	M20	20	200	12	125	32 x 32	0.55
T2-TB-20250	M20	20	250	12	150	32 x 32	0.65
T2-TB-20320	M20	20	320	12	190	32 x 32	0.75
T2-TB-2280	M20	22	80	14	55	35 x 35	0.35
T2-TB-22100	M20	22	100	14	65	35 x 35	0.40
T2-TB-22125	M20	22	125	14	85	35 x 35	0.45
T2-TB-22160	M20	22	160	14	110	35 x 35	0.50
T2-TB-22200	M20	22	200	14	125	35 x 35	0.60
T2-TB-22250	M20	22	250	14	150	35 x 35	0.70
T2-TB-22320	M20	22	320	14	190	35 x 35	0.80
T2-TB-24100	M24	24	100	16	70	40 x 40	0.55
T2-TB-24125	M24	24	125	16	85	40 x 40	0.60
T2-TB-24160	M24	24	160	16	110	40 x 40	0.75
T2-TB-24200	M24	24	200	16	125	40 x 40	0.85
T2-TB-24250	M24	24	250	16	150	40 x 40	1.00
T2-TB-24320	M24	24	320	16	190	40 x 40	1.25
T2-TB-24400	M24	24	400	16	240	40 x 40	1.40
T2-TB-28100	M24	28	100	18	70	44 x 44	0.65
T2-TB-28125	M24	28	125	18	85	44 x 44	0.65
T2-TB-28160	M24	28	160	18	110	44 x 44	0.85
T2-TB-28200	M24	28	200	18	125	44 x 44	0.95
T2-TB-28250	M24	28	250	18	150	44 x 44	1.15
T2-TB-28320	M24	28	320	18	190	44 x 44	1.35
T2-TB-28400	M24	28	400	18	240	44 x 44	1.60
T2-TB-36125	M30	36	125	22	80	54 x 54	1.25
T2-TB-36160	M30	36	160	22	110	54 x 54	1.45
T2-TB-36200	M30	36	200	22	135	54 x 54	1.60
T2-TB-36250	M30	36	250	22	150	54 x 54	1.90
T2-TB-36320	M30	36	320	22	200	54 x 54	2.05
T2-TB-36400	M30	36	400	22	250	54 x 54	2.20
T2-TB-42160	M36	42	160	26	100	65 x 65	2.75
T2-TB-42200	M36	42	200	26	150	65 x 65	2.90
T2-TB-42250	M36	42	250	26	175	65 x 65	3.00
T2-TB-42320	M36	42	320	26	200	65 x 65	3.15
T2-TB-42400	M36	42	400	26	250	65 x 65	3.35