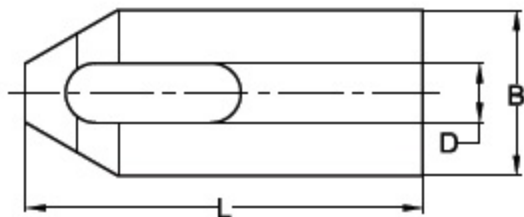
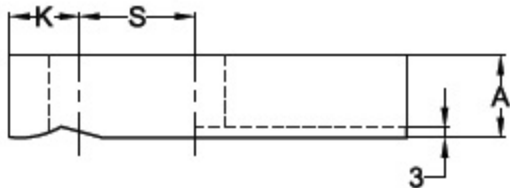


Slotted Clamp



Material: Medium carbon steel, hardened and tempered to 24-32 HRC and Chemically Blackened.

TYPE: T1-SC						IS: 6082 - 1985	
TYPE	D x L	A	B	K	S	Suitable for screw size	Weight in kg
T1-SC-1175	11 x 75	16	30	15	20	M10	0.20
T1-SC-1195	11 x 95	16	30	15	30	M10	0.25
T1-SC-14100	14 x 100	20	40	18	30	M12	0.45
T1-SC-14115	14 x 115	20	40	18	38	M12	0.55
T1-SC-18120	18 x 120	25	50	21	35	M16	0.85
T1-SC-18135	18 x 135	25	50	21	42	M16	1.00
T1-SC-22140	22 x 140	30	60	25	40	M20	1.40
T1-SC-22150	22 x 150	30	60	25	50	M20	1.55
T1-SC-26200	26 x 200	35	70	35	55	M24	2.95
T1-SC-26240	26 x 240	35	70	35	75	M24	3.55
T1-SC-33250	33 x 250	39	79	45	70	M30	4.40
T1-SC-33300	33 x 300	39	79	45	95	M30	5.20