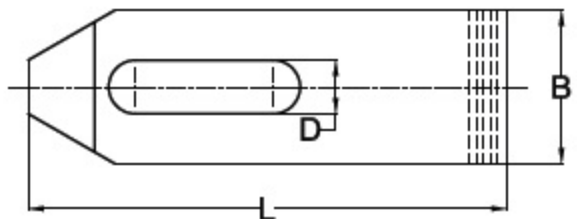
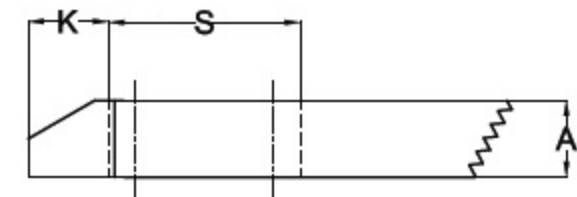


Serrated Strap Clamp



Material: Medium carbon steel, hardened and tempered to 24-32 HRC and Chemically Blackened.

Applications: On machines for work holding in combination with Universal Serrated Blocks (Type: T3-USB) for instant height adjustment.

TYPE: T1-SSC						DIN: 6314 Z	
TYPE	D x L	A	B	K	S	Suitable for screw size	Weight in kg
T1-SSC-960	9 x 60	12	25	13	22	M8	0.10
T1-SSC-1180	11 x 80	15	30	15	30	M10	0.20
T1-SSC-14100	14 x 100	20	40	21	40	M12	0.45
T1-SSC-14125	14 x 125	20	40	21	50	M12	0.60
T1-SSC-18125	18 x 125	25	50	26	45	M16	0.90
T1-SSC-18160	18 x 160	25	50	26	65	M16	1.20
T1-SSC-22160	22 x 160	30	60	30	60	M20	1.65
T1-SSC-22200	22 x 200	30	60	30	80	M20	2.10
T1-SSC-26200	26 x 200	30	70	35	80	M24	2.40