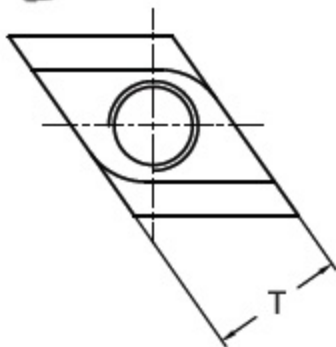
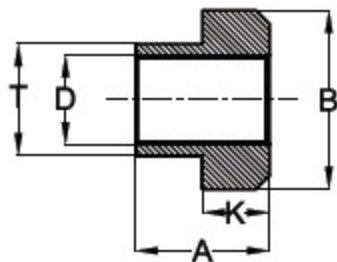


# Rhombus T-Nut



INSERT INTO T-SLOT



ROTATE CLOCKWISE  
TO SECURE



**Material:** Medium carbon steel, hardened and tempered to 24-32 HRC and Chemically Blackened.

## TYPE: T2-RTN

TYPE	T	ØD	A	K	B	Weight in kg
T2-RTN-1210	12	M10	14	7	18	0.015
T2-RTN-1412	14	M12	16	8	22	0.025
T2-RTN-1612	16	M12	18	9	25	0.040
T2-RTN-1614	16	M14	18	9	25	0.035
T2-RTN-1816	18	M16	20	10	28	0.050
T2-RTN-2016	20	M16	24	12	32	0.080
T2-RTN-2216	22	M16	28	14	35	0.120
T2-RTN-2220	22	M20	28	14	35	0.105
T2-RTN-2420	24	M20	32	16	40	0.170
T2-RTN-2824	28	M24	36	18	44	0.220
T2-RTN-3630	36	M30	44	22	54	0.455
T2-RTN-4236	42	M36	52	26	65	0.700