

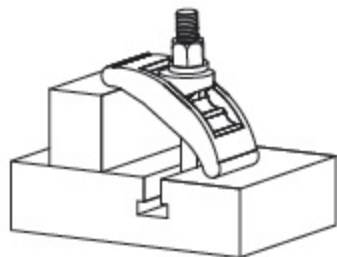
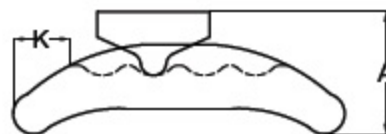
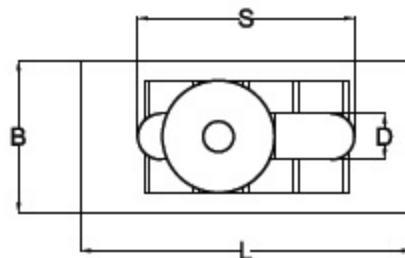
Quick Clamp

Material:

Clamp and Saddle: High tensile S G Iron,
Enamelled in Flame Red colour.

T-Bolt, Flanged Hex Nut: Medium Carbon Steel Hardened and
tempered to 24-30 HRC and Chemically Blackened.

Applications : On Presses, Plastic Moulding machines, Milling
and Drilling Machines and CNC Machining Centres.



Note: T1-QC is supplied
with T-Bolt as standard.
Clamping Stud is optional.

TYPE: T1-QC								
TYPE	Suitable for T-Slot in mm	D x S	L x B	A	K	Clamping Range in mm	T -Bolt Size	Weight In kg
T1-QC-1/12	12	18 x 85	130 x 60	50	16	0 - 60	M12 x 12 x 125L	1.15
T1-QC-1/14	14						M12 x 14 x 125L	1.15
T1-QC-1/16	16						M16 x 16 x 125L	1.20
T1-QC-2/18	18	22 x 95	160 x 70	57	32	0 - 70	M16 x 18 x 200L	2.00
T1-QC-2/20	20						M20 x 20 x 200L	2.20
T1-QC-2/22	22	26 x 115	185 x 80	60	36	0 - 80	M20 x 22 x 200L	2.25
T1-QC-3/24	24						M24 x 24 x 200L	3.20
T1-QC-3/28	28						M24 x 28 x 200L	3.30