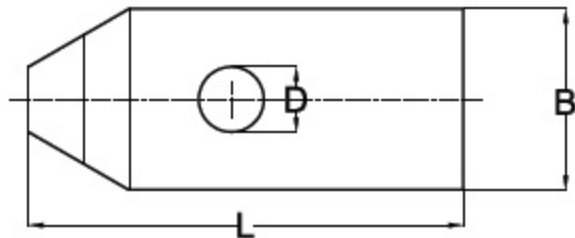
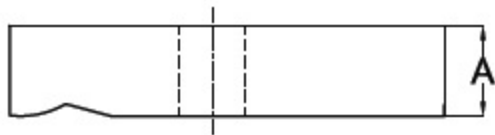


Plain Clamp



Material: Medium carbon steel, hardened and tempered to 24-32 HRC and Chemically Blackened.

TYPE: T1-PC				IS: 6081 - 1985	
TYPE	D x L	A	B	Suitable for screw size	Weight in kg
T1-PC-1170	11 x 70	16	30	M10	0.20
T1-PC-1480	14 x 80	20	40	M12	0.40
T1-PC-18100	18 x 100	25	50	M16	0.85
T1-PC-22120	22 x 120	30	60	M20	1.45
T1-PC-26150	26 x 150	35	70	M24	2.40
T1-PC-33200	33 x 200	39	79	M30	4.10