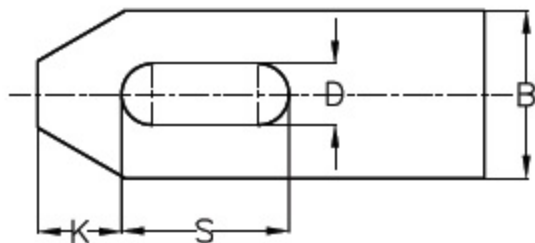


# Flat Strap Clamp



**Material:** Medium carbon steel, hardened and tempered to 24-32 HRC and Chemically Blackened.

TYPE: T1-FSC						IS: 4292 - 1984	
TYPE	D x L	A	B	K	S	Suitable for screw size	Weight in kg
T1-FSC-960	9 x 60	14	25	13	22	M8	0.15
T1-FSC-1180	11 x 80	16	30	15	30	M10	0.25
T1-FSC-14100	14 x 100	20	40	21	40	M12	0.50
T1-FSC-14125	14 x 125	20	40	21	50	M12	0.65
T1-FSC-18125	18 x 125	25	50	26	45	M16	1.00
T1-FSC-18160	18 x 160	25	50	26	65	M16	1.25
T1-FSC-22160	22 x 160	35	60	30	60	M20	2.10
T1-FSC-22200	22 x 200	35	60	30	80	M20	2.65
T1-FSC-26200	26 x 200	35	70	35	80	M24	3.25
T1-FSC-26250	26 x 250	40	70	35	105	M24	4.15
T1-FSC-33250	33 x 250	39	79	45	100	M30	4.80
T1-FSC-33315	33 x 315	49	79	45	130	M30	7.90
T1-FSC-39315	39 x 315	45	90	48	125	M36	8.35
T1-FSC-39350	39 x 350	55	90	48	150	M36	11.40
T1-FSC-39400	39 x 400	55	90	48	180	M36	13.20