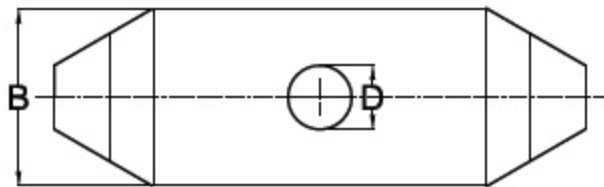
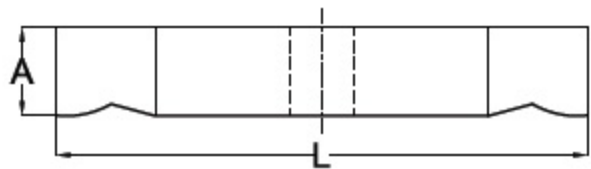


# Double Ended Clamp



**Material:** Medium carbon steel, hardened and tempered to 24-32 HRC and Chemically Blackened.

TYPE: T1-DEC				IS: 6080-1985	
TYPE	D x L	A	B	Suitable for screw size	Weight in kg
T1-DEC-1160	11 x 60	16	30	M10	0.15
T1-DEC-1185	11 x 85	16	30	M10	0.25
T1-DEC-14100	14 x 100	20	40	M12	0.50
T1-DEC-14125	14 x 125	20	40	M12	0.65
T1-DEC-18125	18 x 125	25	50	M16	1.00
T1-DEC-18150	18 x 150	25	50	M16	1.20
T1-DEC-22150	22 x 150	30	60	M20	1.70
T1-DEC-22200	22 x 200	30	60	M20	3.10
T1-DEC-26200	26 x 200	35	70	M24	3.20
T1-DEC-26250	26 x 250	35	70	M24	4.00
T1-DEC-33200	33 x 200	39	79	M30	4.20
T1-DEC-33250	33 x 250	39	79	M30	5.00
T1-DEC-33315	33 x 315	39	79	M30	6.40