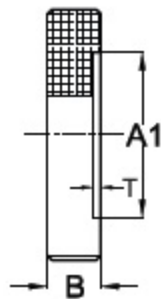
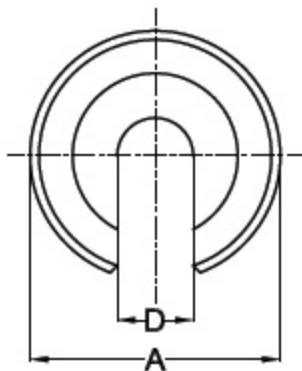


C Washer



Material: Low carbon steel, case hardened to 35-42 HRC and Chemically Blackened.

| TYPE: T3-CWN | | | | | | IS: 4291 - 1996 |
|--------------|-----|------|----|----|-----|-----------------|
| TYPE | A | D | B | A1 | T | Weight in kg |
| T3-CWN-M8 | 28 | 8.4 | 7 | 21 | 1 | 0.02 |
| T3-CWN-M10 | 34 | 10.5 | 8 | 25 | 1.2 | 0.04 |
| T3-CWN-M12 | 40 | 13 | 9 | 30 | 1.8 | 0.05 |
| T3-CWN-M16 | 56 | 17 | 12 | 37 | 1.8 | 0.16 |
| T3-CWN-M20 | 64 | 21 | 14 | 45 | 2 | 0.25 |
| T3-CWN-M24 | 75 | 25 | 16 | 52 | 2 | 0.35 |
| T3-CWN-M30 | 90 | 31 | 18 | 65 | 2 | 0.60 |
| T3-CWN-M36 | 100 | 37 | 20 | 75 | 2.5 | 0.80 |